

General Information:

Gewicht / weight	0.68 kg
Einbaulage / installation position	Beliebig / any
max.Druck / max. pressure (1)	350 bar
max.Druck / max. pressure (2)	420 bar
max.Druck / max. pressure (3) Hinweis / Note: Druck addiert sich zum Vorsteuerdruck 4 (5) / pressure adds to the pilot pressure 4 (5)	<10 bar
max. Vorsteuerdruck / max. pilot pressure (4, 5)	<50 bar
max. Volumenstrom / max. recommended flow	400 l/min
Öffnungsbeginn / ganz offen start opening / end opening	8 / 25 bar
Normbohrung / cavity	8.00142 /-1
Dichtsatz / seal kit (NBR)	279.975.606.7
Gehäuse / ported body	978.004.002.9
Anzugsmoment / tightening torque	140 Nm

Hydraulic data:

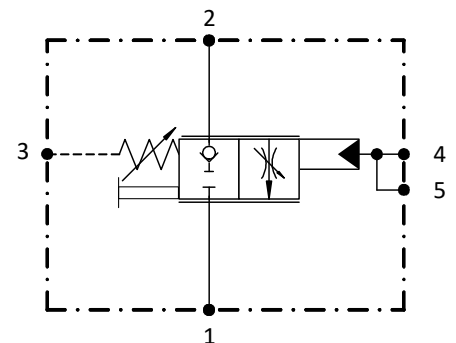
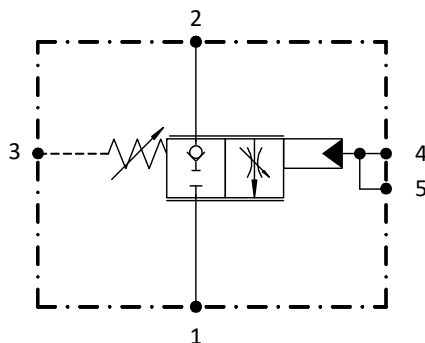
Druckflüssigkeit / hydraulic medium	(HL, HLP) per DIN 51524
Temperatur / temperature range	-20 to +80 °C
Umgebungstemperatur / environmental temperature	< +50 °C
Viskositätsbereich / viscosity range	2.8 - 500 mm <sup>2</sup> /s
Verschmutzungsgrad / degree of contamination	filtering conforming with NAS 1638, class 9, with minimum retention rate $\beta_{10} \geq 75$

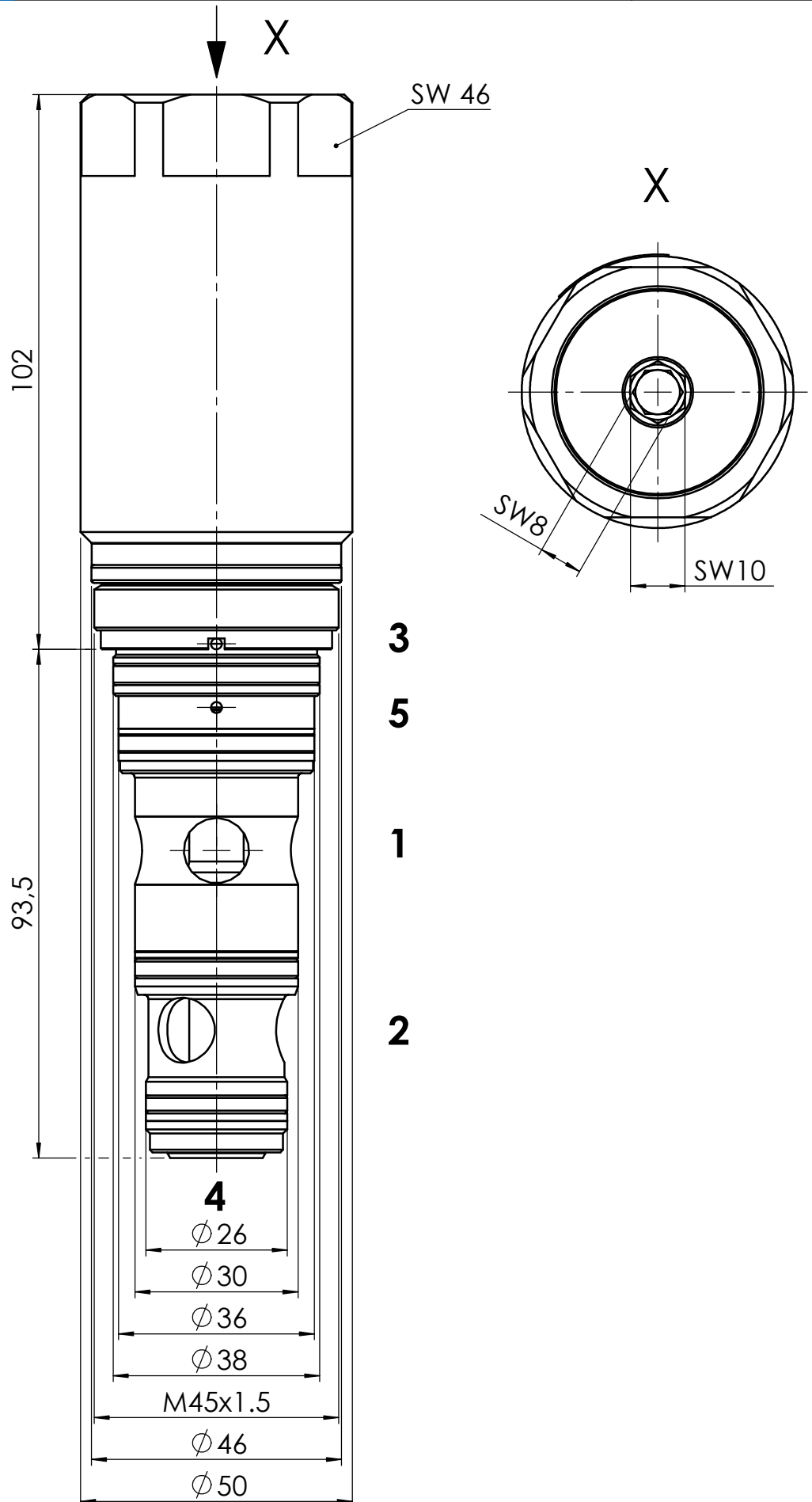
Surface:

gal. beschichtet / electroplating coated

we engineer your progress

Hubbegrenzung / speed adjustment





we engineer your progress



-WEGEVENTIL 2/2

D2P-R18V4

control valve 2/2

D2P-R18V4

type code  
D2P-R18V4

part-no.  
see table

	Ident-Nr./ part-no.	Wegeventil/ control valve		Öffnungsbeg./ ganz offen start opening/ end opening	Durchfluss/ recommended flow	Hinweis/ note
		basic	with speed adj.			
preferred valves	137.900.109.9	137.900.183.8	X		8 / 25 bar	150 l/min
	137.900.110.9	137.900.155.8	X		8 / 25 bar	200 l/min
	137.900.111.9	137.900.152.8	X		8 / 25 bar	300 l/min
	137.900.112.9	137.900.185.8	X		8 / 25 bar	400 l/min
	137.900.113.9	137.900.139.8		X	8 / 25 bar	150 l/min
	137.900.114.9	137.900.133.8		X	8 / 25 bar	200 l/min
	137.900.115.9	137.900.148.8		X	8 / 25 bar	300 l/min
	137.900.116.9	137.900.146.8		X	8 / 25 bar	400 l/min
customized						

we engineer your progress

(at 50 bar Δp)