

Table of Contents

1	Product Description	2
1.1	Application	2
1.2	Mounting location.....	2
2	Function	2
2.1	Characteristics	2
3	Technical Data	2
3.1	General	2
3.2	Hydraulics	2
4	Ordering Information	3
4.1	Type code	3
4.2	Versions currently available	3
5	Installation	4
5.1	General remarks	4
5.2	Installation - space	4
5.3	Dimensions	4
6	Notes, Standards and Safety Requirements	4
6.1	General remarks	4
6.2	Standards.....	4

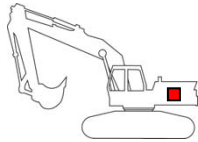
1 Product Description

Shuttle valves have two inflows (A, B) and a drain (C) and lock the input currents in the direction of the lower pressure itself off oil leakage

1.1 Application

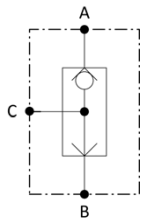
If one wants to expand an existing purely hydraulic pilot control with an electric proportional pilot control in order to use both alternately, this can be performed easily with this shuttle valve.

1.2 Mounting location



It is screwed into the port(s) of the pilot control valve and connected with the pilot control line..

2 Function



2.1 Characteristics

- Leakage-free
- external mounting
- 360 ° rotatable

3 Technical Data

3.1 General

Criterion	Units	Value	
Max. operating pressure	bar	see type code feature 04	
Max. volume flow	bar	see type code feature 03	
Weight	kg	0,3	
Connection			
Connection sizes		Pmax	
A, B	G 1/4; ISO 1179-1	bar	50
C	M14x1.5 / 8L	bar	50
Installation position			Any

3.2 Hydraulics

Criterion	Units	Value
Hydraulic fluid		Mineral oil (HL, HLP) conforming with DIN 51524, other fluids upon request
Hydraulic fluid temperature range	°C	-20 – +80
Ambient temperature:	°C	< +50
Viscosity range	mm ² /s	2.8 – 500
Contamination grade		Filtering conforming with NAS 1638, class 9, with minimum retention rate $\beta_{10} \geq 75$

4 Ordering Information

4.1 Type code

SHV	1N	03B	004	050
00	01	02	03	04

00	Product group	Shuttle Valve	SHV
01	Variant	housing is screwable	1N
02	Connections	G1/4 (ISO 1179-1)	03B
03	Qmax.	4 LPM	004
04	Pmax.	50 BAR	050

XXX – permanently predetermined characteristics **XXX** – characteristics selectable by customer ■ available ○ not available
Different configurations are unfortunately not implementable for technical reasons. Please let us know if you have questions.

4.2 Versions currently available

The versions listed below are available as standard. Further versions as part of the options given on the type code can be configured upon request.

designation	type code	part no.
SHV-1N G1/4 004LPM 50BAR	SHV -1N -03B -004 -050 - - - -000	421.001.206.8

5 Installation

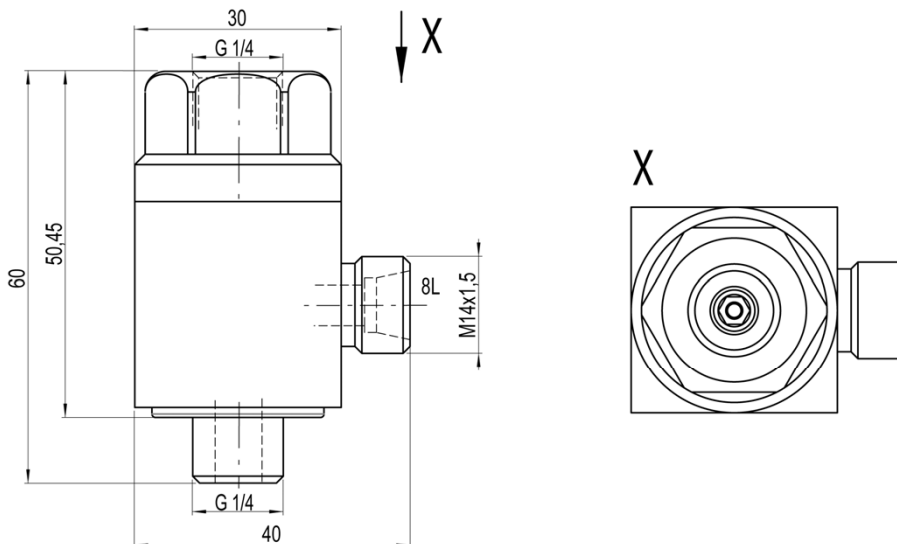
5.1 General remarks

- Observe all installation and safety information of the construction machine manufacturer.
- Only technically permitted changes are to be made on the construction machine.
- The user has to ensure that the device is suitable for the respective application.
- Application exclusively for the range of application specified by the manufacturer.
- Before installation or dismantling, the hydraulic system is to be depressurized.
- Settings are to be made by qualified personnel only.
- May only be opened with the approval of the manufacturer, otherwise the warranty is invalidated.
- The included connection recommendations are not guaranteed. The functionality and the technical specifications of the construction machine must be checked.

5.2 Installation - space

- Observe the connection labels
- Observe the strength category and torsional torque of the clamp bolts
- Do not damage seals and flange surface
- The air must be exhausted from the hydraulic system

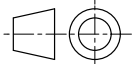
5.3 Dimensions



6 Notes, Standards and Safety Requirements

6.1 General remarks

- The views in drawings are shown in accordance with the European normal projection variant



- A comma (,) is used as a decimal point in drawings
- All dimensions are given in mm

6.2 Standards

The following standards must be observed when installing and operating the valve:

- DIN EN ISO 13732-1:2008, Temperatures on accessible surfaces