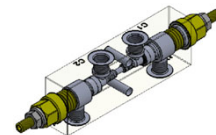
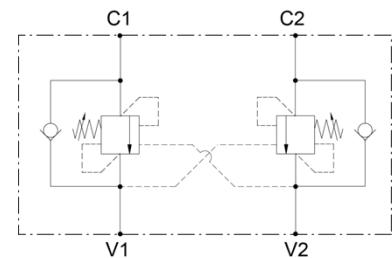


**Technical description**

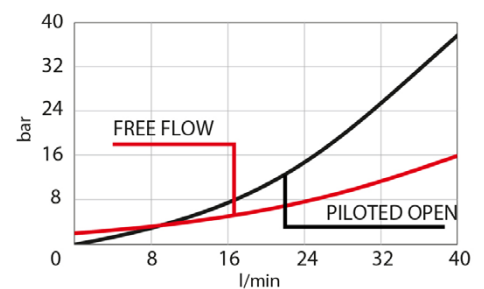
body material	zinc plated steel
capacity	40 lpm (10 gpm)
ports size	V1,V2,C1,C2: G1/4
max operating pressure	350 bar (5000 psi)
pilot ratio	4:1
maximum setting	420 bar (6100 psi)
minimum setting	60 bar (870 psi)
Pressure setting established @	cracking pressure (1in3/min)
maximum valve leakage at reseal	5 drops /minute
operating characteristic	standard
reseal	>80%
maximum recommended load pressure at maximum setting	330 bar (4800 psi)
valve weight	0,6 kg
external component surface treatment	zinc plating + sealing
temperature range	-30 to 100°C (-22 to 212°F) with BunaN seals
fluids	Mineral-based or synthetics with lubricating properties at viscosities of 10 to 500 mm/s (cSt)
filtration	Nominal value max. 10µm (NAS 8) / ISO 4406 19/17/14



**Properties**

- G1/4 ports
- Adjustable
- Low losses
- leakage free

- Backpressure at port 2 adds to the effective relief setting at a ratio of 1 plus the pilot ratio times the backpressure
- Set your counterbalance valve at least 1.3 times the maximum load induced pressure
- Indicated Reseat value is obtained with valve set @ maximum setting
- For customized settings and for settings from 360 bar to 420 bar please consult factory
- For special ports please consult factory



**Type Code**

V | A | L | - | S | N | D | 7 | 9 | L | 0 | 4 | G | 1 | 4 | - |   | - | 0 | 0 | 0

**Adjustable Setting**  
 Spring M = 60 -210bar  
 Standard Setting 200 bar  
 Spring D = 110 - 350bar  
 Standard Setting 350bar

Dimensions

pressure increase per turn	Spring M: 103 bar/turn Spring D: 171,5 bar/turn
adjustment screw internal hex size	4
seal-lock hex size	13
seal-lock torque	12-15 Nm (9-11 lbf ft)

