

General Information:

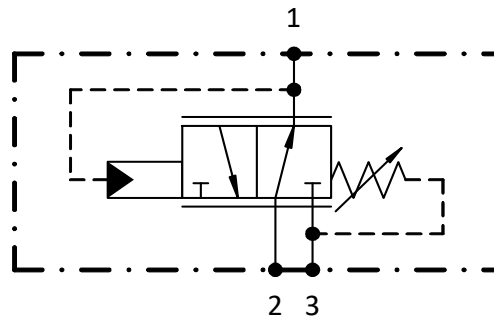
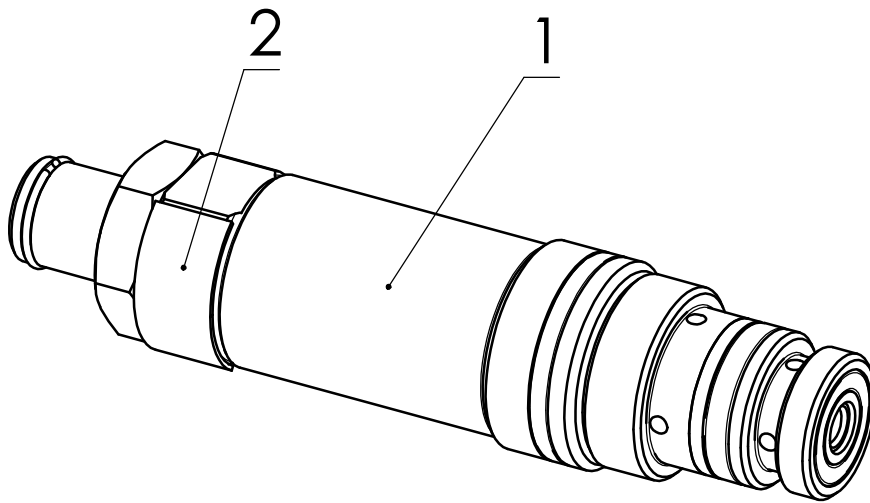
Gewicht/weight	ca. 0.12 kg
Einbaulage/ Installation position	beliebig/ various
max. Betriebsdruck/ maximum operating pressure (port 2)	420 bar
max. Druck/ max. pressure (port 3)	<1 bar
Einstellbereich/ adjustable range (port1)	7 - 200 bar
max. Volumenstrom/ max. recommended flow	8 l/min
Normbohrung / cavity	8.00056 / -1
Dichtsatz / seal kit (NBR)	279.982.607.7
Gehäuse / ported body	978.004.006.9
Anzugsmoment / tightening torque	30 Nm

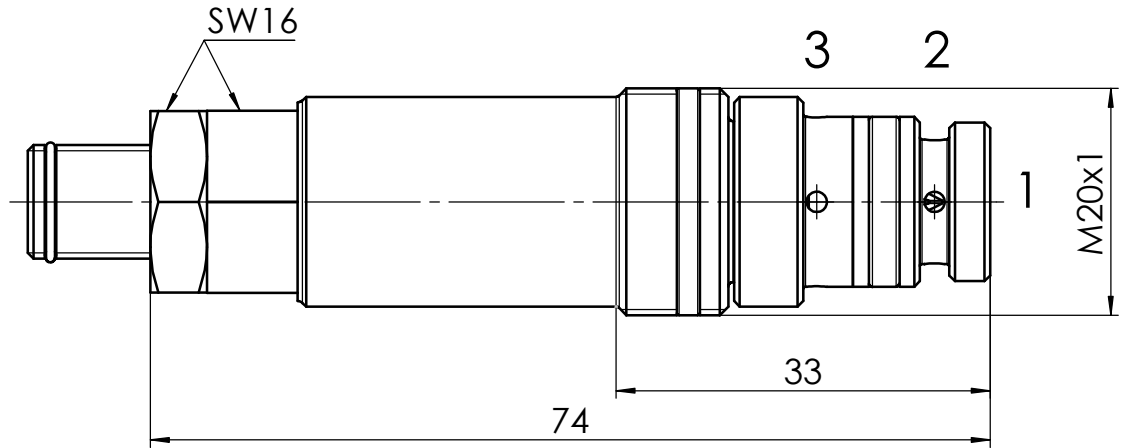
Hydraulic data:

Druckflüssigkeit/ Hydraulic medium	(HL, HLP) per DIN 51524
Temperatur/ temperature range	-20 to +80 °C
Umgebungstemperatur/ environmental temperature	< +50 °C
Viskositätsbereich/ Viscosity range	2.8 - 500 mm ² /s
Verschmutzungsgrad/ degree of contamination	filtering conforming with NAS 1638, class 9, with minimum retention rate β ₁₀ ≥75

Surface:

galv. beschichtet / electroplating coated





Part no.	Einstellung/ adjustment	Druckregelbereich
410.082.415.9	27 bar	7-30 bar
410.082.413.9	30 bar	26-72 bar
410.082.417.9	40 bar	26-72 bar
410.082.416.9	100 bar	70-123 bar
410.082.414.9	200 bar	119-200 bar