

General Information:

Gewicht/ weight	2.0 kg
Einbaulage/ installation position	beliebig/ various
max. Betriebsdruck/ max. operating pressure	420 bar
max. empfohlener Druck an T1/ max. recommended pressure (T1)	<20 bar
Der Druck an T1 addiert sich zum Einstellwert/ the pressure on T1 is added to the set value	
max. empfohlener Volumenstrom über das Druckventil/ max. recommended flow about pressure relief valve	80 l/min

Surface:

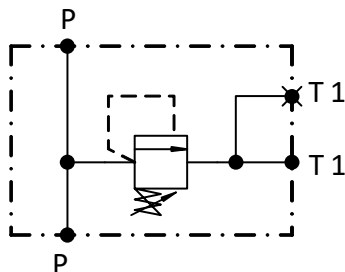
gal. beschichtet / electroplating coated

Hydraulic data:

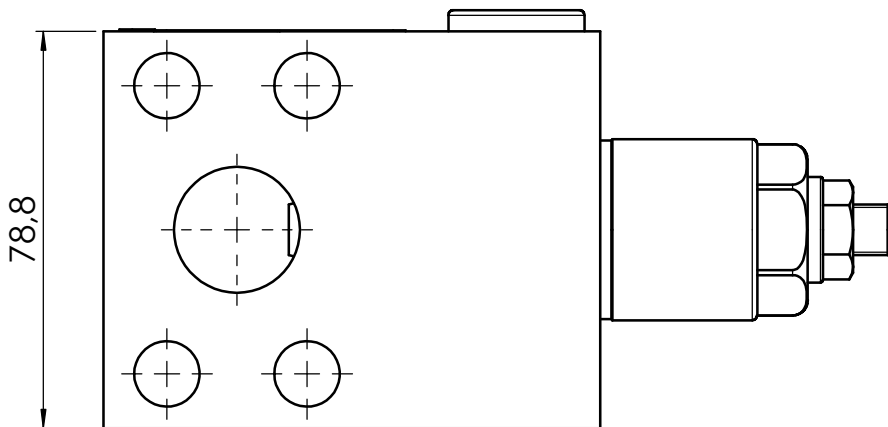
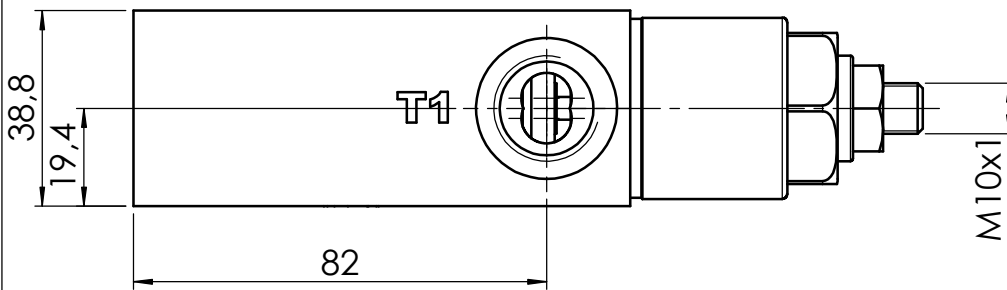
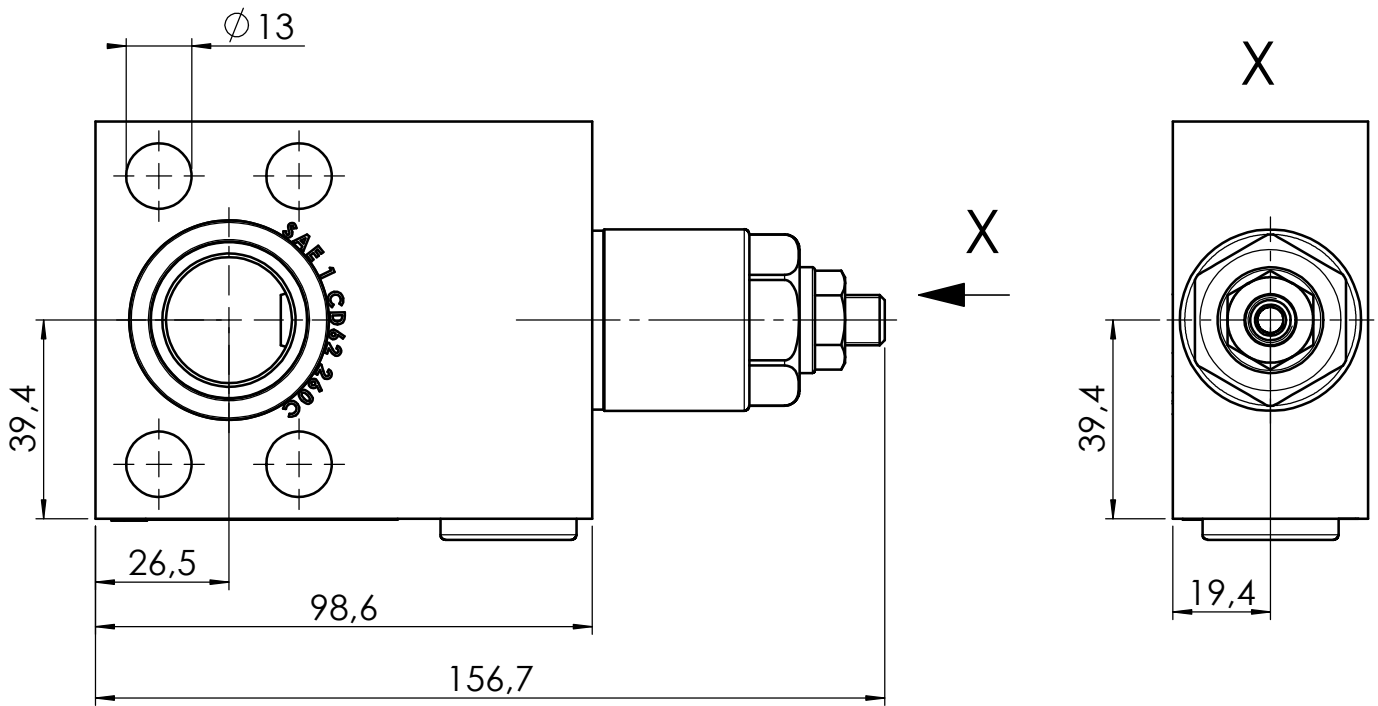
Druckflüssigkeit/ Hydraulic medium	(HL, HLP) per ISO 6743-4 2015
Temperatur/ temperature range	-20 to +100 °C
Umgebungstemperatur/ environmental temperature	< +50 °C
Viskositätsbereich/ Viscosity range	2.8 - 500 mm <sup>2</sup> /s
Verschmutzungsgrad/ degree of contamination	ISO 4406 18/16/13

we engineer your progress

Ident-Nummer part number	Einstellbereich Druckventil adjustment range pressure relief valve
416.001.403.9	250 - 420 bar
416.001.406.9	150 - 300 bar
416.001.409.9	50 - 200 bar
406.001.412.9	20 - 70 bar



Anschluss/ port	Anschlussgröße/ size	Norm	Anzugsmoment/ torque	Erläuterung/ annotation
P	SAE 1"	ISO 6162-2 (SAEJ 518 Code62)	see specification	Versorgungsleitung/ supply port
T1	G1/2"	ISO 1179-1	see specification	tank
Reinke	prepared on	22.06.22	project no.	part no.
				416.001.403.9
				index 01
				page 1
				of 2



we engineer your progress