

General Information:

| | |
|--|----------------|
| Gewicht / weight | 0.153 kg |
| Einbaulage / installation position | Beliebig / any |
| max. Betriebsdruck / max. operating pressure | 420 bar |
| max. Volumenstrom / max. recommended flow | 450 l/min |
| Öffnungsbeginn / start opening | 0.3 bar |
| ganz offen / end opening | 0.8 bar |
| Normbohrung / cavity | 8.00295 |
| Dichtsatz / seal kit (NBR) | 279.945.609.7 |
| Gehäuse / ported body | 978.004.016.9 |
| Anzugsmoment / tightening torque | 100 Nm |

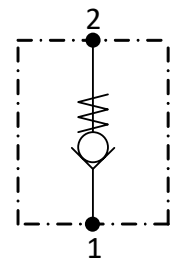
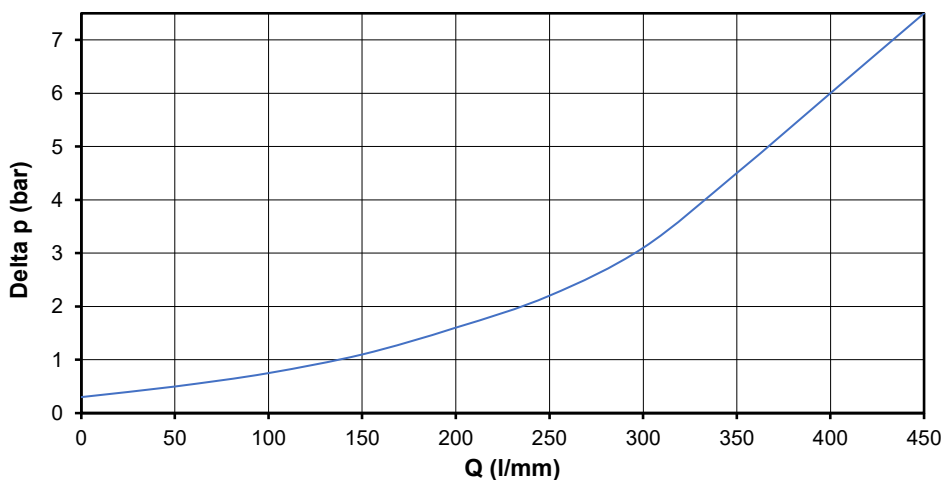
Hydraulic data:

| | |
|--|-------------------------------------|
| Druckflüssigkeit/ Hydraulic medium | (HL, HLP) per ISO 6743-4 2015 |
| Temperatur/ temperature range | -20 to +100 °C |
| Umgebungstemperatur/ environmental temperature | < +50 °C |
| Viskositätsbereich/ Viscosity range | 2.8 - 500 mm ² /s |
| Verschmutzungsgrad/ degree of contamination | ISO 4406 18/16/13 |
| Verschmutzungsgrad/ degree of contamination (prop. valves) | ISO 4406 17/15/12 |

Surface:

gal. beschichtet / electroplating coated

Delta p



| order code | part-no. | seal |
|---------------|---------------|------|
| 978.004.017.9 | 426.000.023.8 | NBR |
| | | |

