

**General Information:**

Gewicht / weight	0.24 kg
Einbaulage / installation position	Beliebig / any
max. Betriebsdruck / max. operating pressure	420 bar
max. Volumenstrom / max. recommended flow	600 l/min
Öffnungsbeginn / start opening	0.7 bar
ganz offen / end opening	1.4 bar
Normbohrung / cavity	8.00172
Dichtsatz / seal kit (NBR)	279.946.609.7
Gehäuse / ported body	978.004.021.9
Anzugsmoment / tightening torque	100 Nm

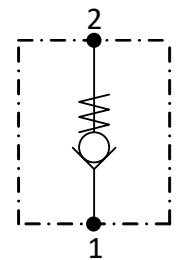
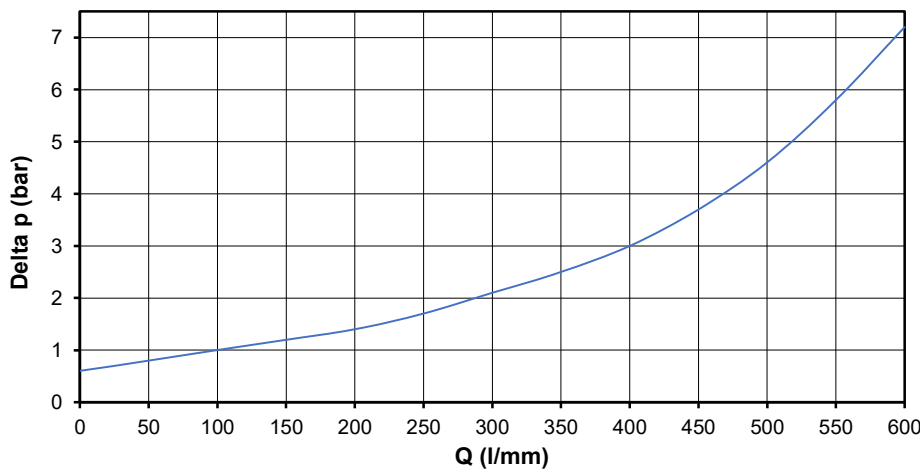
**Hydraulic data:**

Druckflüssigkeit/ Hydraulic medium	(HL, HLP) per ISO 6743-4 2015
Temperatur/ temperature range	-20 to +100 °C
Umgebungstemperatur/ environmental temperature	< +50 °C
Viskositätsbereich/ Viscosity range	2.8 - 500 mm <sup>2</sup> /s
Verschmutzungsgrad/ degree of contamination	ISO 4406 18/16/13
Verschmutzungsgrad/ degree of contamination (prop. valves)	ISO 4406 17/15/12

**Surface:**

gal. beschichtet / electroplating coated

**Delta p**



order code	part-no.	seal
978.004.020.9	428.000.001.8	NBR

