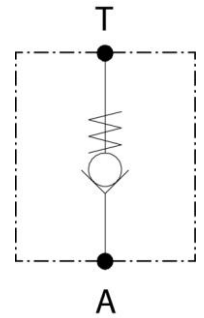


## Check valve CVS-1N

- Suitable as a tank pre-load valve
- Connection size: SAE 1 1/4"
- Preload pressures: 3 bar, 4.5 bar



Schematic

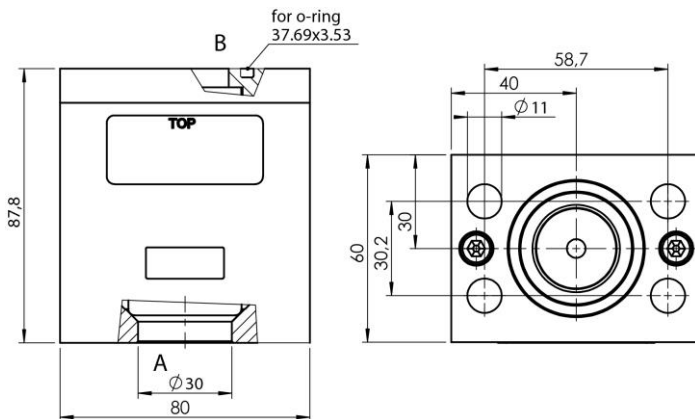


### Product Description

The check valve CVS-1N is flangeable and locks the flow in direction from T to A completely. The valve locks the flow in direction from A to T up to a pressure of 3 or 4.5 bar. The valve is designed with a guided cone.

### Application example: Tank Preload

The valve is installed in the return line right before the tank inlet. The oil flowing back from the consumers is preloaded and is therefore available for suction functions in order to prevent cavitation. The valve is available with different preload pressures (3 bar, 4.5 bar). Customized housings are possible.



### Applications

- Excavator
- Mobile cranes
- Material handling machines

### Type Code

<b>CVS-1N</b>	-	<b>XXX</b>
Product group		Port sizes
		3,0 bar
		4,5 bar

### Technical data

installation position	any
weight	2,4kg
maximum inlet pressure	50bar
maximum volume flow	400 l/min