

Priority valve FC1-1D

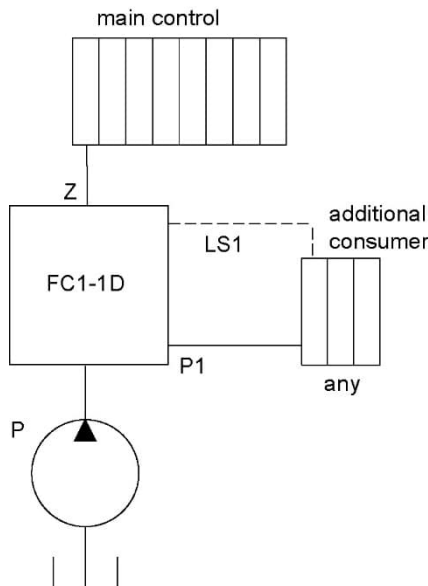
Flow divider valve with variable preferential flow rate

To build up an additional hydraulic system

Priority valves are used to supply an additional consumer with a preferential volume flow. The residual volume flow is provided to supply the existing main functions on the machine.

The valve is suitable for open-center and closed-center systems. The separated volume flow to the additional consumer has priority over the main functions.

The valve is flanged directly to the pump or to the pump inlet of the main control. The combination with other valves enables a wide range of applications.



Characteristics

- Supplies important functions with priority
- volume flow division according to demand
- diverts low to highest power suitable for all common mobile hydraulic systems
- additional load-sensing subsystem in any hydraulic system

Typical applications

- Attachment milling machine
- Attachment compactor
- Drilling machine
- Slope mower
- Generator
- Harvester aggregate
- Demolition shear
- Mulcher

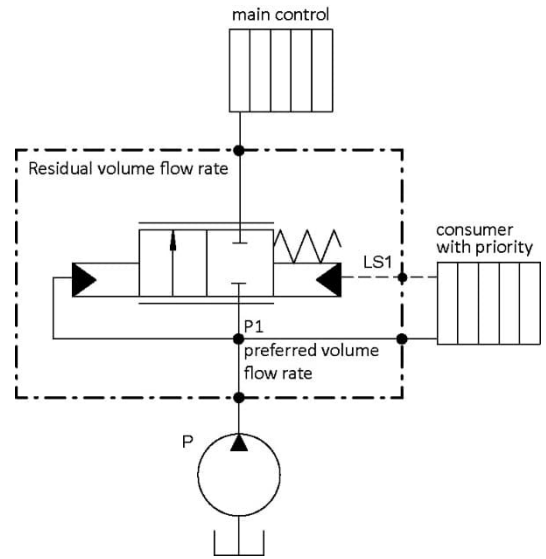
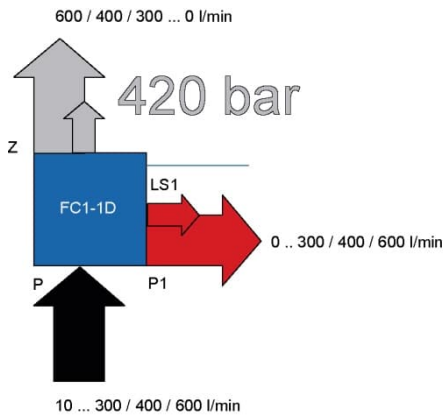
Available versions

Connection sizes: SAE 3/4", 1", 1 1/4"
 Maximum operating pressure: 420 bar
 Flow rate: 300/400/600 l/min

For construction machinery, forestry and agricultural machinery

Priority valve FC1-1D

Flow divider valve with variable preferential flow rate



Simplified circuit examples

