



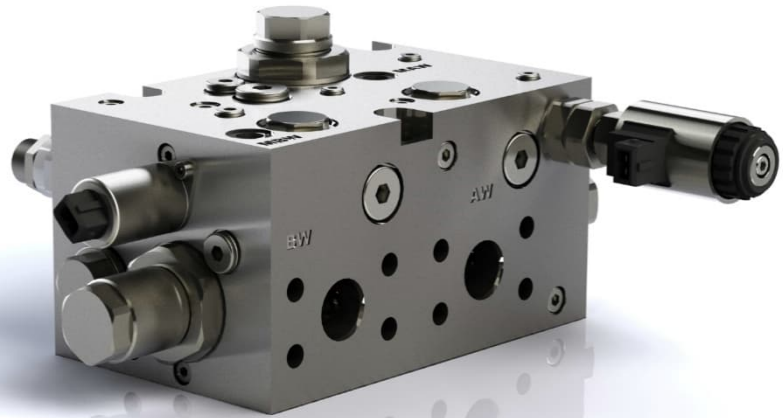
TOP-Valve

Tool Operation and Protection

Retrofit Attachment Tools easy and safe

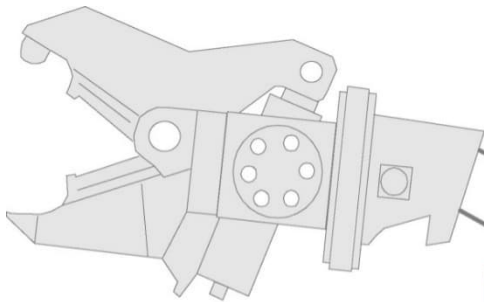
Maximum 400 lpm, 400 bar

Most excavators are equipped with an auxiliary circuit where hydraulic tools / attachment can be operated with. These tools have very different limits for maximum pressure and maximum volume flow. The TOP-Valve can adjust these limits electrical-proportional. The WESSEL Tool Control plus can save the appropriate current settings for different tools and operate the attached tool via the TOP-Valve.

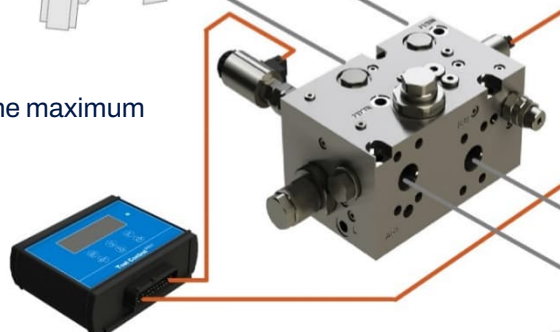


- easy to install
- in any hydraulic system
- energy saving

A proportional pressure control valve limits the maximum consumer pressure energetically optimized.



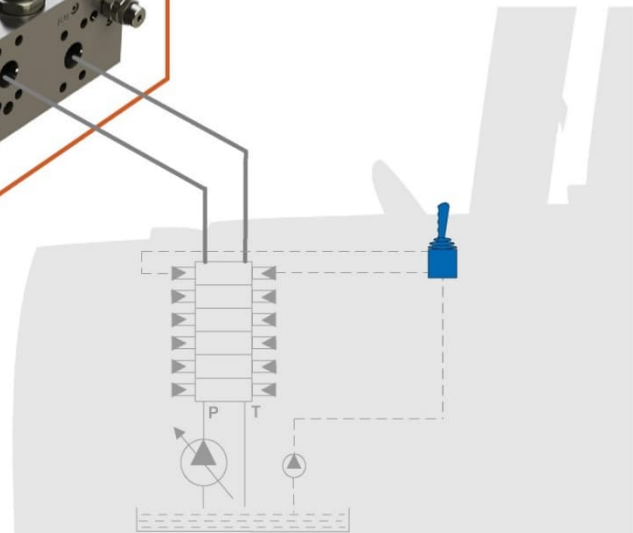
A proportional flow control valve limits the maximum volume flow for both directions.



The WESSEL Tool Control plus can save parameters for up to 16 tools.

Example

Compactor	160 l/min @ 240 bar
Shear	240 l/min @ 320 bar
Breaker	180 l/min @ 200 bar



we engineer your progress
for a sustainable tomorrow



Easy to install

In the lines A and B between auxiliary section and attachment – at any location with enough space

- In the engine compartment or
- On the boom

The installation is easy and absolutely **independent of the hydraulic system**. The tool can furthermore be actuated with the standard joystick.

Technical specifications

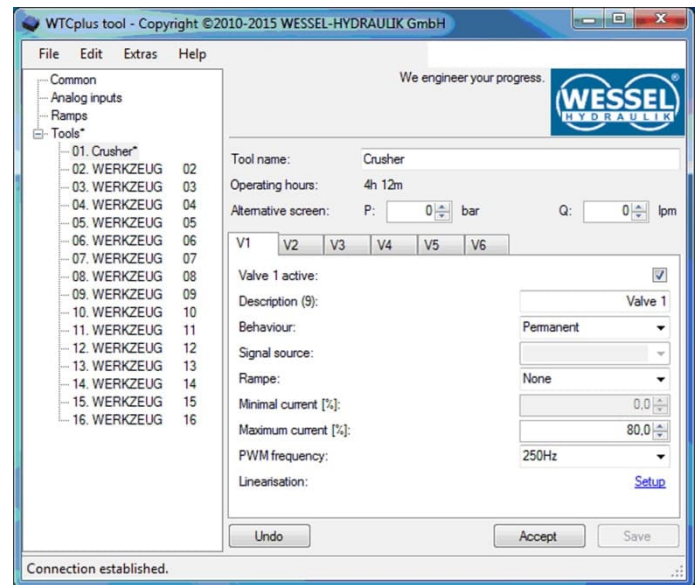
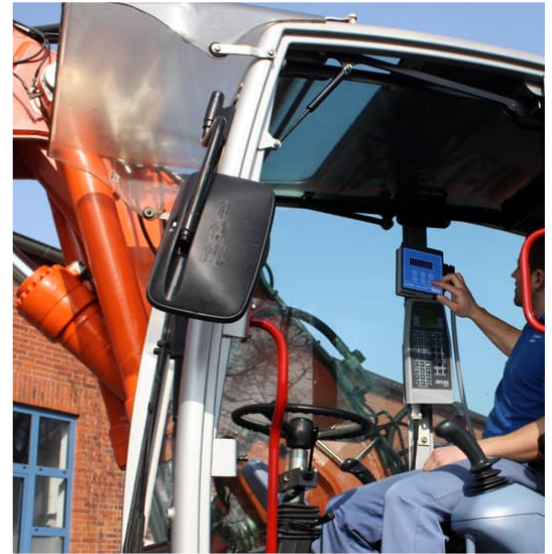
- Maximum operating pressure 400 bar
- Maximum flow 400 l / min
- Port size SAE 1 "
- Supply voltage 12 VDC or 24 VDC

More efficiency

Some tools already work with a flow controller. Normally, this is an energetically unfavorable 2-way flow controller, which accumulates the supply pressure to the maximum and thus the pump is already forced to displace. The TOP-Valve is equipped with a 3-way flow controller, which only permits the pressure needed for the tool.

Easy programming

- Directly at the WESSEL Tool Control *plus* or
- with a software tool on a PC / laptop



Easy to expand

In addition to the control of a TOP-Valve WESSEL Tool Control plus can furthermore operate e.g. a dump valve as a direct bypass to the tank and reduce return pressure to a minimum.

Order Information

FC2-TOP - TOP-valve SAE 1"

CTR-TC - WESSEL Tool Control plus

PN: 437.363.600.9

PN: 000.310.007.9



WESSEL-HYDRAULIK GmbH

Liebigstraße 8
26389 Wilhelmshaven Germany
Telefon +49 4421 9911-0
www.wessel-hydraulik.de
info@wessel-hydraulik.de

