

Load Holding / Load Lowering Valves Type VAL

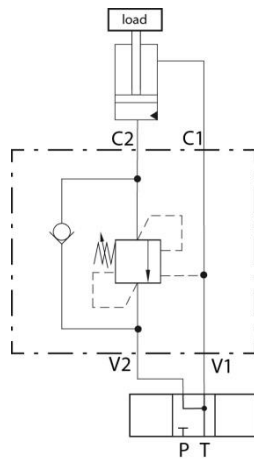
Holding Loads safely and controlled lowering

Valves of type VAL prevent moving ahead of cylinders or motors due to external loads. They block the connection to which the load pressure acts without leakage. Only when a movement is to be initiated by the inlet pressure to the opposite side of the cylinder or the motor, the valve is opened by this pressure acting as a pilot control signal, and the load is lowered in a controlled manner. In addition to the load holding and lowering function, the valves include a low-loss check valve function and a pressure-limiting function.

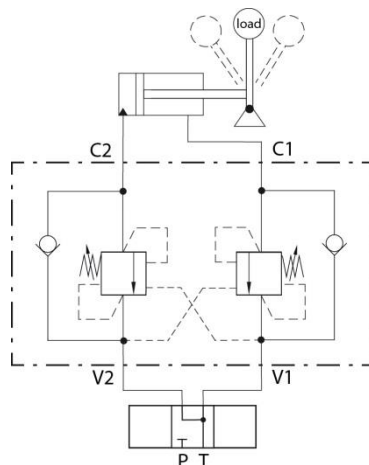
They are usually mounted directly on the consumer or as close as possible to it.



Single valve in a block: Load holding for one direction



Double valve in a block: Load holding for both directions



Samples

| | |
|--------------------|-----------|
| Operating pressure | 350 bar |
| VAL-SNS79 | 40 l/min |
| VAL-SNS31 | 90 l/min |
| VAL-SNS34 | 150 l/min |

Main features

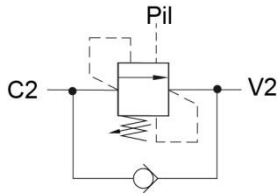
- Leakage free holding function
- Controlled lowering
- Minimum flow loss



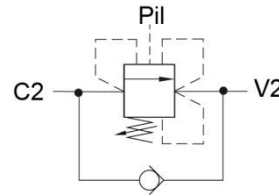
Typical applications

- Loading cranes
- Lifting platforms
- Construction machinery
- Forestry machinery
- Agricultural machinery
-

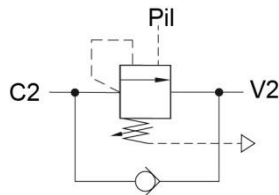
Functional Variants



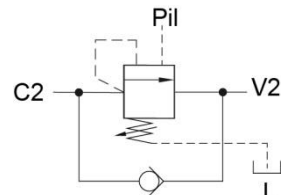
Type VAL-SNS
Standard:
The spring chamber is relieved to port V2. The opening level of the pressure valve is increased by return pressure



Type VAL-SCS
Compensated:
The opening level of the pressure valve remains independent of the return pressure, but the opening level of the lowering brake valve increases accordingly

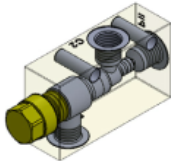


Type VAL-SVS
Ambient pressure compensated:
The opening level of the pressure valve and of the lowering brake valve remain independent of the return pressure

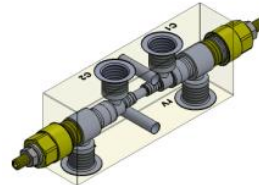


Type VAL-SDS
Completely compensated:
By connecting the spring chamber with the leakage port, the opening level of the pressure valve and of the lowering brake valve remain independent of the return pressure

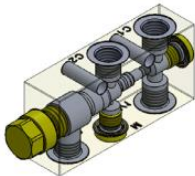
Block Variants



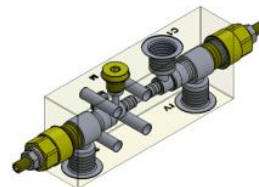
Complete
Pipe installation, externally
piloted



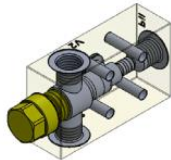
Complete
Pipe installation



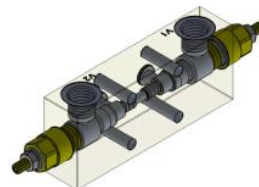
Complete
Pipe installation, externally
piloted



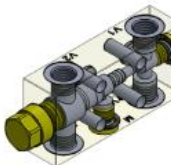
One flange connection
for cylinder applications



One flange connection
for cylinder
applications



Two flange connections
for cylinder applications



Two flange connections
for cylinder applications

