

1 Product Deatails

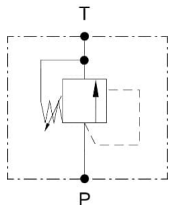
The pressure valve is designed as cartridge valve. It is a direct operated valve for flow rates up to 10 l/min, which can be adjusted manually. The adjustment can be protected by a cap. The components are designed robust. The valve can be charged up to 500 bar and is delivered at a certain pressure. The pressure valve is used to protect high volume lift cylinders in truck cranes. It should avoid excessive pressure increase in unmoving cylinders due to warming ("sushine valve").



Features

- Cartridge type
- Small installation space
- Robust construction
- Stepped cavity (corresponds to Bucher UVP-4)
- Seat valve, leakage free

2 Technical Data

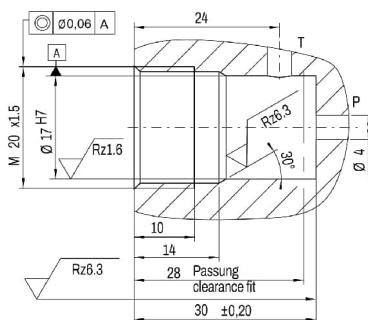
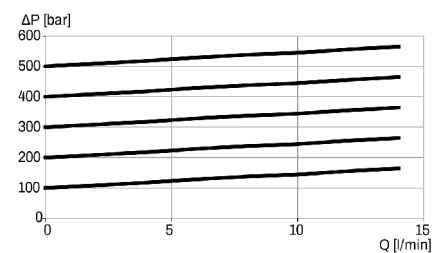
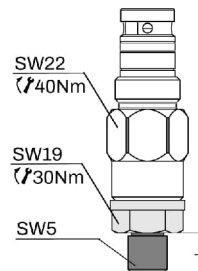
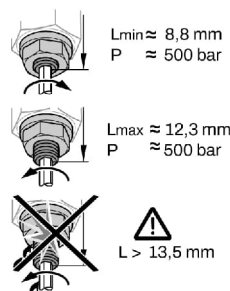
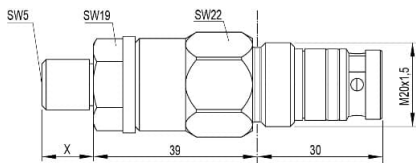


P – protected point
T - tank

| Criteria | Unit | Value |
|--------------------------------|-------|---|
| Installation position | | any |
| Weight | kg | 0,1 |
| Surface protective | | Zinc coated |
| Maximum input pressure (P) | bar | 550 |
| Adjustable pressure | bar | 100 - 500 |
| Maximum Tankpressure (T) | bar | 8 |
| Maximum input flow rate (P) | l/min | 10 |
| Hydraulic fluid | | Mineral oil (HL, HLP) conforming with DIN 51524 other fluids upon request |
| Hydraulic fluid pressure range | °C | -25 bis +80 |
| Ambient temperature | °C | < +50 |
| Viscosity range | mm2/s | 2,8 - 500 |
| Contamination grade | | Filtering conforming with NAS 1638 class 9, with minimum retention rate $\beta_{10} \geq 75$ |

Setting

The valve can be adjusted with a set screw. For this purpose, the protective cap must be removed and the counter nut undone.



Stepped cavity (corresponds to Bucher UVP-4)

The pilot-operated pressure relief valve is a cartridge component and is screwed into a stepped bore as shown in the drawing below.

Ordering Information

| | | | | | | | |
|-----|-----|----|----|-----|----|-----|----|
| PRV | DSU | CA | 10 | 500 | | 239 | N |
| 00 | 01 | 02 | 03 | 04 | 05 | 06 | 07 |

| | | | |
|----|---------------------------------|---|--------|
| 00 | Product group | Pressure relief valves | PRV |
| 01 | Variant | manual adjustable | DSU |
| 02 | Port / Case | Cartridgeventil | CA |
| 03 | Input flow rate Qmax. | 10 l/min | 10 |
| 04 | Max. permissible pressure Pmax. | 500 bar | 500 |
| 05 | Activation | Manually adjustable 100-500bar | MAN100 |
| 06 | Stepped cavity | WESSEL-Patrone 8.00239 (stepped cavity) | 239 |
| 07 | Seal | NBR, temperatur range -25°C bis +80°C | N |

| Designation | Type Code | Part nr. |
|---|--------------------------------|---------------|
| PRV-DSU-CA-10LPM-500BAR-MAN230BAR-239-NBR | PRV-DSU-CA-10-500-MAN230-239-N | 412.072.451.9 |
| PRV-DSU-CA-10LPM-500BAR-MAN235BAR-239-NBR | PRV-DSU-CA-10-500-MAN235-239-N | 412.072.430.9 |
| PRV-DSU-CA-10LPM-500BAR-MAN290BAR-239-NBR | PRV-DSU-CA-10-500-MAN290-239-N | 412.072.433.9 |
| PRV-DSU-CA-10LPM-500BAR-MAN340BAR-239-NBR | PRV-DSU-CA-10-500-MAN340-239-N | 412.072.431.9 |
| PRV-DSU-CA-10LPM-500BAR-MAN420BAR-239-NBR | PRV-DSU-CA-10-500-MAN420-239-N | 412.072.432.9 |

The versions listed below are available as standard. Further versions as part of the options given on the type code can be configured upon request.

3 Installation

General informaton

- Observe all installation and safety information of the construction machine / attachment tools manufacturer.
- Only technically permitted changes are to be made on the construction machine.
- The user has to ensure that the device is suitable for the respective application.
- Application exclusively for the range of application specified by the manufacturer.
- Before installation or de-installation, the hydraulic system is to be depressurized.
- Settings are to be made by qualified personnel only.
- Opening is only to be performed with the approval of the manufacturer, otherwise the warranty is invalidated.

Montage - Bauraum

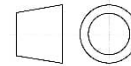
- Observe connection names.
 - Do not damage seals and flange surface.
 - Its hydraulic system must be vented
 - Ensure sufficient free space for setting and installation work
- CAUTION: Hydraulic hoses must not touch the pressure relief valve, otherwise they are subject to thermal damaging. Tightening torques must be observed. Torque wrench needed.

4 Hinweise, Normen und Sicherheitsanforderungen

General Instructions

The views in drawings are shown in accordance with the European normal projection variant

- A comma (,) is used as a decimal point in drawings
- All dimensions are given in mm



Standards

The following standards must be observed when installing and operating the valve:

- DIN EN ISO 13732-1:2008-12, Temperatures on accessible surfaces

5 Accesories

- Safety cap: 275.066.000.6