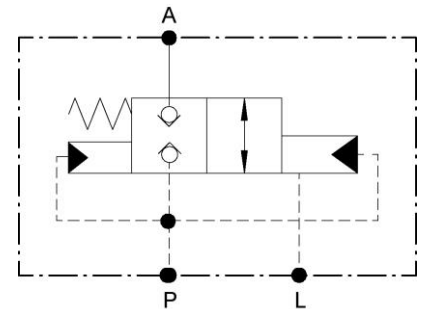


Oscillating Axle Locking Valve

- Suitable as an oscillating axle lock for excavators and wheel loaders
- Port sizes M16x1.5
- Leakage free locking



Schematic

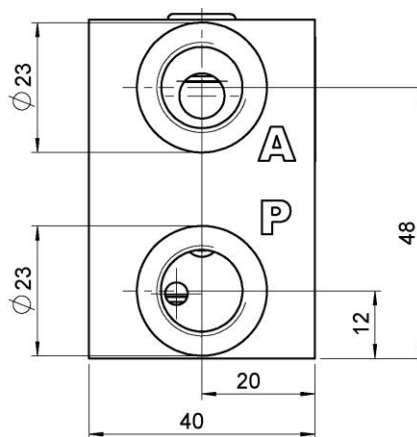
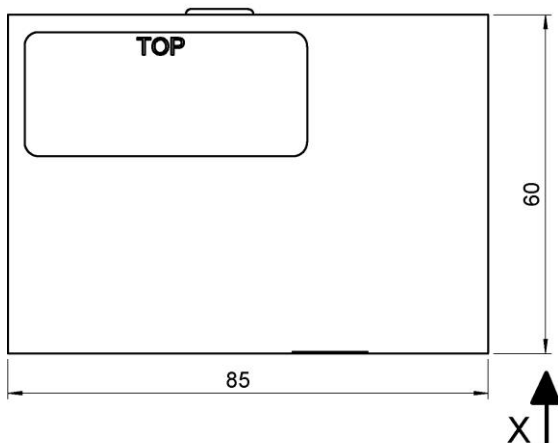


Product description

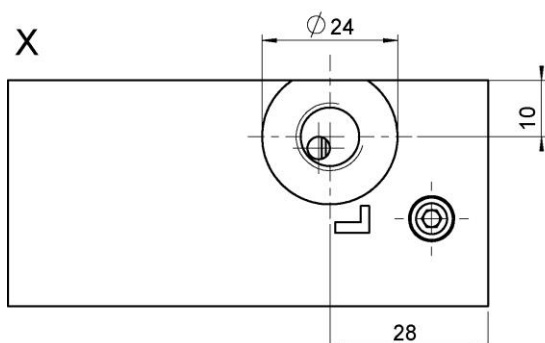
Port A is connected with the oscillating axle cylinder. As long as there is no pressure at port P the cylinder is locked leakage free. As soon as the pressure exceeds 12+/-2 bar the oscillating axle valve opens. The opening pressure is determined by a spring force and the area ratio of the check valve spool.

Application example

A typical application is the blocking of the oscillation axle cylinder in an excavator or wheel loader. The cylinders are unlocked during travel and must be locked when the machine is being operated (slewing motion). During the slewing motion the axle is locked by the valve and thus the stability of the machine is ensured. If it is unlocked, the machine would tilt and the stability is not given.



Technical Data



Installation position	Any
Weight	1,5kg
Maximum operating pressure (P, A)	300 bar
Maximum pressure (L)	10 bar
Maximum volume flow	20 l/min
Port P, A	M16x1,5 - ISO 9974-1
Port L	M12x1,5 - ISO 9974-1