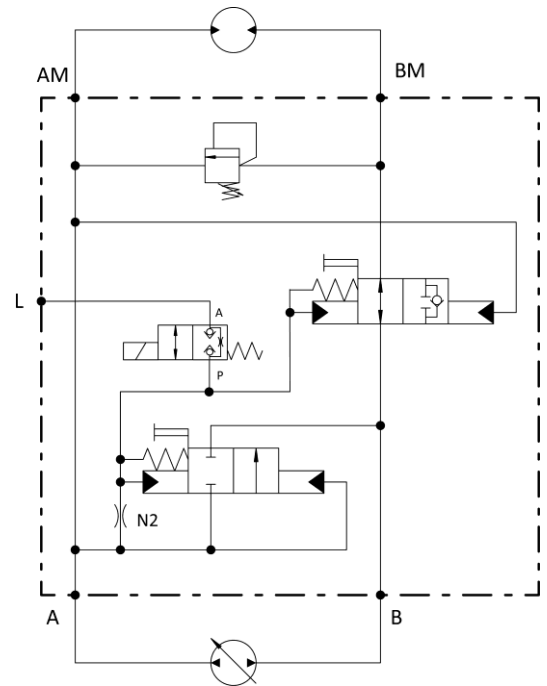


QSV-2N - Quick Stop Valve

- Flanged on motor
- Electrical actuation



Schematic



Productdescription

The quick stop valve is used for bringing a hydraulic motor to a standstill in the quickest possible time controlled by an electronic signal.

Application

It can be used anywhere that stopping a hydraulic motor with an extremely short reaction time is important. One application is in forage choppers, where the feed rollers for the forage must be stopped immediately if a metallic object enters the feeder

Technical Data

Installation position	any
weight	13,1 kg
max. input pressure	420 bar
max. Input flow rate	300 l/min
port A, B, AM, BM	SAE 1" – 6000 psi
port L	G ¼ ISO 1179-1

