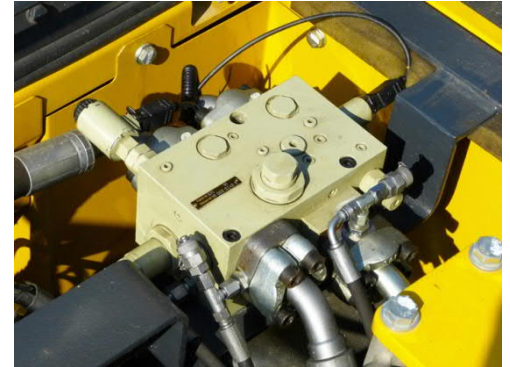


Retrofit Attachment Tools easy and safe

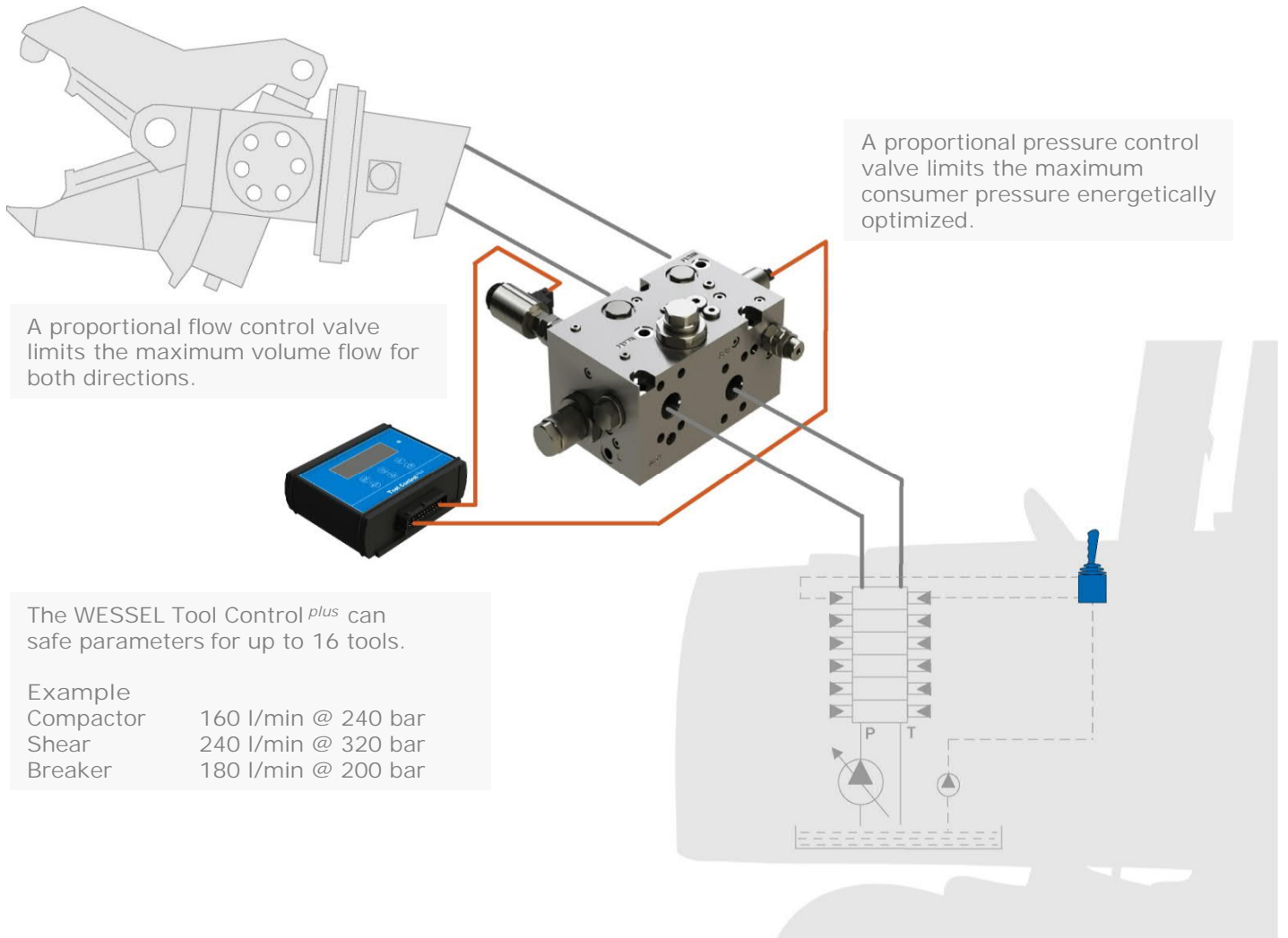
TOP-Valve - Tool Operation and Protection 400 l/min - 400 bar

Most excavators are equipped with an auxiliary circuit where hydraulic tools / attachment can be operated with. These tools have very different limits for maximum pressure and maximum volume flow.

The TOP-Valve can adjust these limits electrical-proportional. The WESSEL Tool Control *plus* can save the appropriate current settings for different tools and operate the attached tool via the TOP-Valve.



- easy to install
- in any hydraulic system
- energy saving



Easy to install

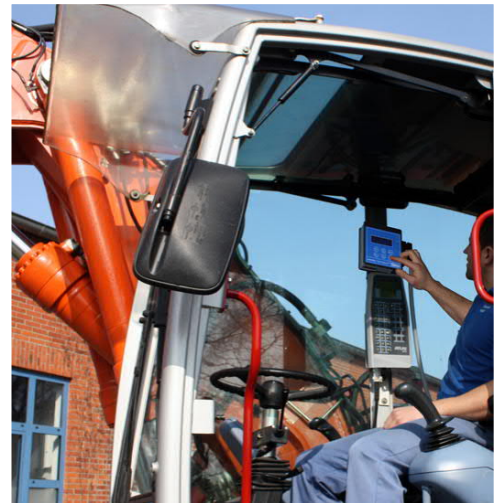
In the lines A and B between auxiliary section and attachment – at any location with enough space

- In the engine compartment or
- On the boom

The installation is easy and absolutely independent of the hydraulic system. The tool can furthermore be actuated with the standard joystick.

Technical specifications

- | | |
|------------------------------|------------------|
| ▪ Maximum operating pressure | 400 bar |
| ▪ Maximum flow | 400 l / min |
| ▪ Port size | SAE 1 " |
| ▪ Supply voltage | 12 VDC or 24 VDC |

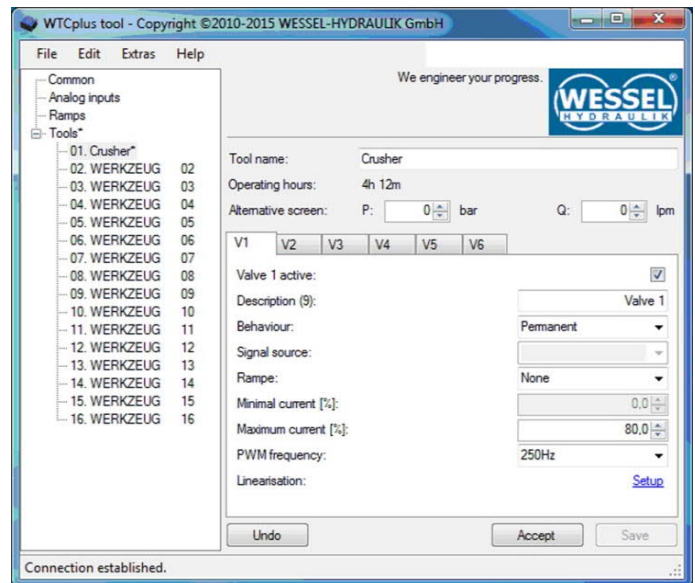


More efficiency

Some tools already work with a flow controller. Normally, this is an energetically unfavorable 2-way flow controller, which accumulates the supply pressure to the maximum and thus the pump is already forced to displace. The TOP-Valve is equipped with a 3-way flow controller, which only permits the pressure needed for the tool.

Easy programming

- Directly at the WESSEL Tool Control *plus* or
- with a software tool on a PC / laptop



Easy to expand

In addition to the control of a TOP-Valve WESSEL Tool Control plus can furthermore operate e.g. a dump valve as a direct bypass to the tank and reduce return pressure to a minimum.

Order Information

FC2-TOP - TOP-valve SAE 1"

PN: 437.363.600.9

CTR-TC - WESSEL Tool Control *plus*

PN: 000.310.007.9

WESSEL-HYDRAULIK GmbH

Liebigstraße 8

26389 Wilhelmshaven Germany

Telefon +49 4421 9911-0

Telefax +49 4421 9911-29

info@wessel-hydraulik.de