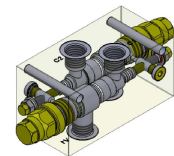
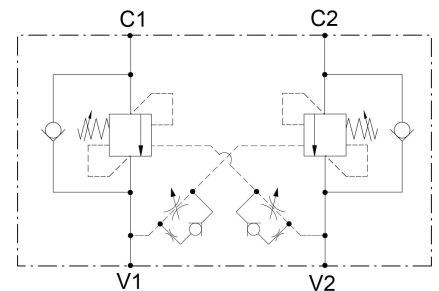




1 Technical Description

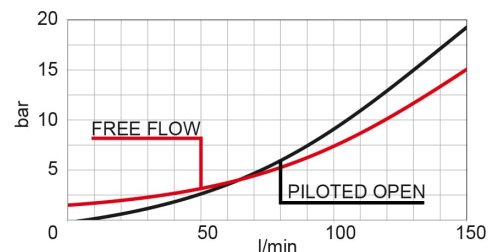
body material	zinc plated steel
capacity	150 lpm (40 gpm)
ports size	V1, V2, C1, C2: G1/2 or V1, V2, C1, C2: G3/4
max operating pressure	350 bar
pilot ratio	4:1 - 8:1
maximum setting	420 bar (6100 psi)
minimum setting	60 bar (870 psi) : 4:1 100 bar (1450 psi): 8:1
Pressure setting established @	cracking pressure (1in ³ /min)
maximum valve leakage at reseal	5 drops /minute
operating characteristic	standard
reseal	>80%
maximum recommended load pressure at maximum setting	330 bar (4800 psi)
valve weight	2,3 kg
external component surface treatment	zinc plating + sealing
temperature range	-30 to 100°C (-22 to 212°F) with BunaN seals
fluids	Mineral-based or synthetics with lubricating properties at viscosities of 10 to 500 mm/s (cSt)
filtration	Nominal value max. 10µm (NAS 8) / ISO 4406 19/17/14

- Backpressure at port 2 adds to the effective relief setting at a ratio of 1 plus the pilot ratio times the backpressure
- Set your counterbalance valve at least 1.3 times the maximum load induced pressure
- Indicated Reseat value is obtained with valve set @ maximum setting
- For customized settings and for settings from 360 bar to 420 bar please consult factory
- For special ports please consult factory



Characteristics

- Adjustable
- G1/2 or G3/4 ports
- different ratios
- Low losses
- leakage free



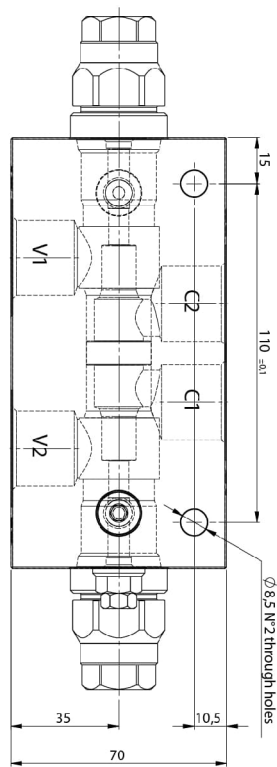
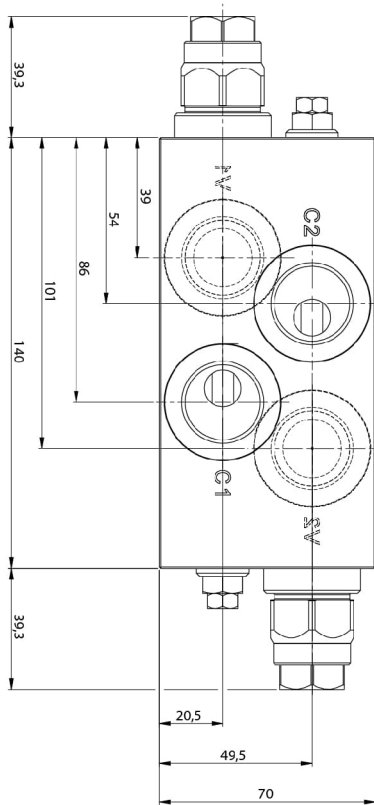
2 Type Code

V	A	L	-	S	N	D	3	4	L	-			-	G			-			-	0	0	0
											Pilot ratio 04 = 4:1 08 = 8:1		Port size G12 = G1/2 G34 = G3/4			Adjustable Setting Spring M = 60 - 210bar Standard Setting 200 bar Spring D = 110 - 350bar Standard Setting 350bar							

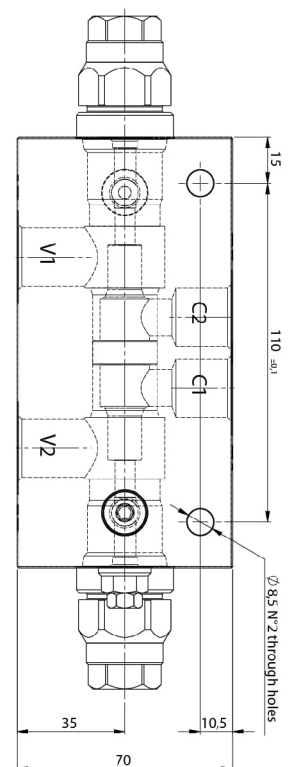
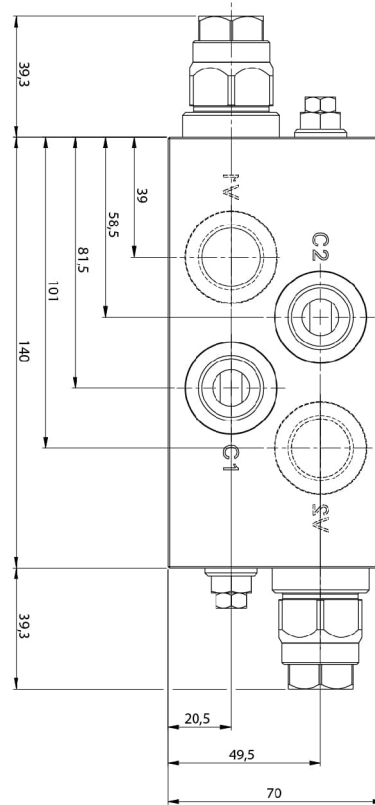
3 Dimensions

pressure increase per turn	4:1	8:1
	Spring M: 30 bar/turn Spring D: 73 bar/turn	Spring M: 54,5 bar/turn Spring D: 132 bar/turn
adjustment screw internal hex size	8	

G3/4



G1/2



4 Notes, Standards and Safety Requirements

4.1 General remarks

- The views in drawings are shown in accordance with the European normal projection variant
- A comma (,) is used as a decimal point in drawings
- All dimensions are given in mm



4.2 Standards

The following standards are to be observed because of the surface temperatures on the load control valve:

- EN 563, Temperatures on surfaces that can be touched.
- EN 982, Safety-technical requirements for fluid-technical systems and their components.